

Forklift truck fuse 80V/125V: 35-800A



Description

Forklift truck fuses are rated 125V(CNN) and 80V(CNL), extending the range of protection for forklift trucks, hand trucks, motorized work platforms, and other DC battery operated systems. Rugged construction and stud mounted bolt-in design assure a long life in adverse conditions for these fuses. The visual window is convenient to observe the state of the fuse.

Ratings

Volts: 125VAC/80VDC @CNN
80VAC/80VDC @CNL

Amps: 35 - 800 A @CNN
35 - 750 A @CNL

I.R. AC: 100KA

I.R. DC: 2500A

Speed/Characteristic: aR

Material Body: Glass fibre

Contact Materials: Silver plated copper

Environmental RoHS Compliant

Standards

I EC 60269-1

I EC 60269-4

Features and Benefits

All fuses are AC and DC rated

Expanded ampere ratings

General purpose types

Link is visible through window

Typical Applications

Battery systems

Forklift trucks

Hand trucks

Motorized work platforms

Forklift truck fuse 80V/125V: 35-800A

Catalog Numbers

Electrical Characteristics			Ordering Information		Dimensions
Size	Rated Current	Voltage	Part number	Carton qty	Figure number
CNN	35	125Vac/80Vdc	CNN-35A	10	Fig.1
	40		CNN-40A		
	50		CNN-50A		
	60		CNN-60A		
	80		CNN-80A		
	90		CNN-90A		
	100		CNN-100A		
	125		CNN-125A		
	130		CNN-130A		
	150		CNN-150A		
	175		CNN-175A		
	200		CNN-200A		
	225		CNN-225A		
	250		CNN-250A		
	275		CNN-275A		
	300		CNN-300A		
	325		CNN-325A		
	350		CNN-350A		
	400		CNN-400A		
	500		CNN-500A		
600	CNN-600A				
700	CNN-700A				
750	CNN-750A				
800	CNN-800A				
CNL	35	80Vac/80Vdc	CNL-35A	10	Fig.2
	40		CNL-40A		
	50		CNL-50A		
	60		CNL-60A		
	80		CNL-80A		
	90		CNL-90A		
	100		CNL-100A		
	125		CNL-125A		
	130		CNL-130A		
	150		CNL-150A		
	175		CNL-175A		
	200		CNL-200A		
	225		CNL-225A		
	250		CNL-250A		
	275		CNL-275A		
	300		CNL-300A		
	325		CNL-325A		
	350		CNL-350A		
	400		CNL-400A		
	500		CNL-500A		
600	CNL-600A				
700	CNL-700A				
750	CNL-750A				

Forklift truck fuse 80V/125V: 35-800A

Dimensions(mm)

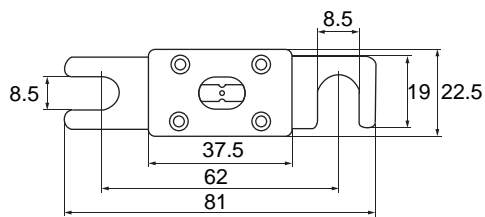


Fig.1

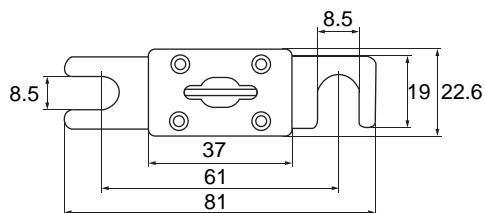
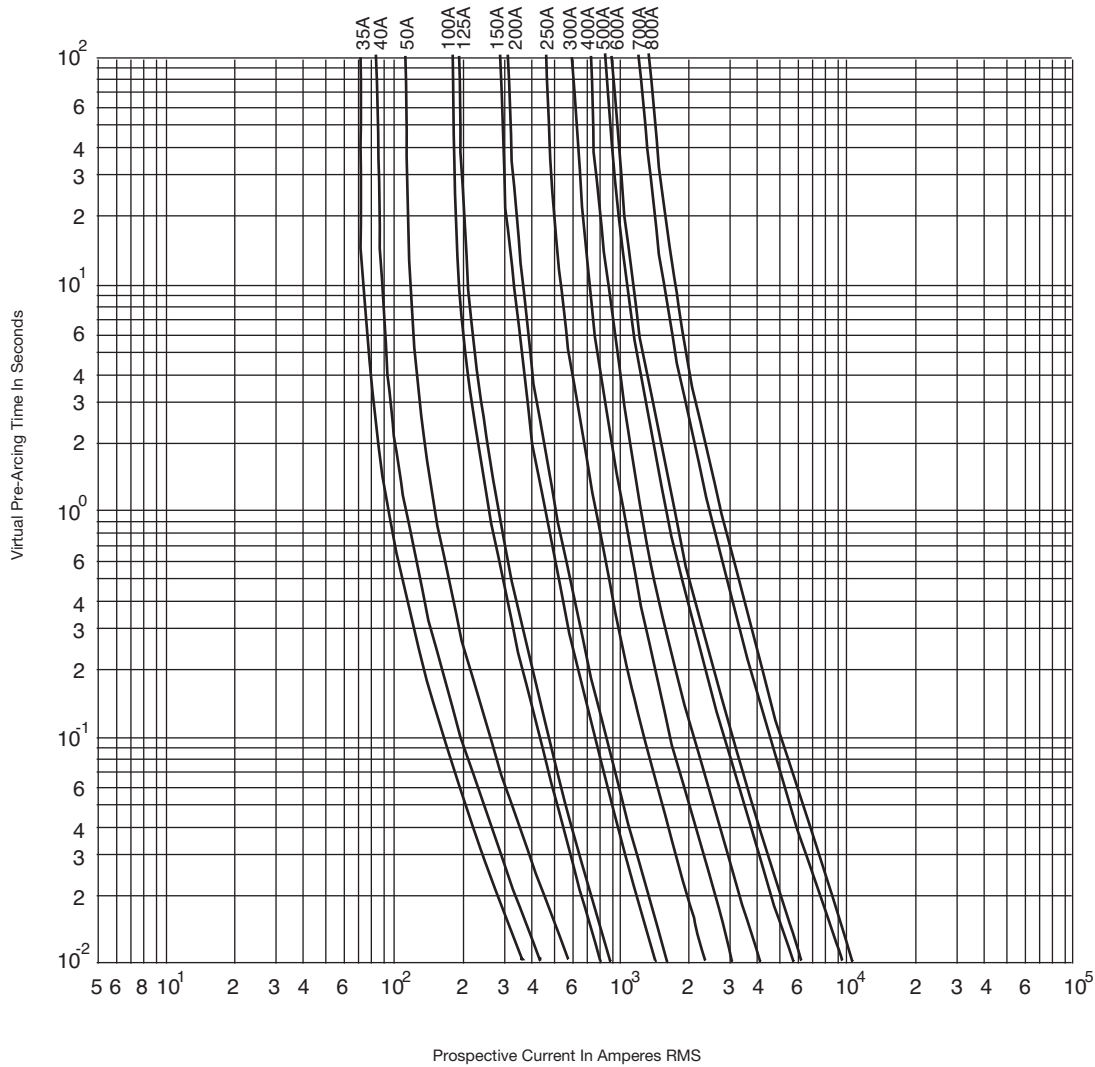


Fig.2

Forklift truck fuse 80V/125V: 35-800A

CNN 35-800A: 125V

Time-Current Curve



Forklift truck fuse 80V/125V: 35-800A

CNL 35-750A: 80V

Time-Current Curve

